

CrewChief Critical Weather

WWW.CREWCHIEF.BIZ

Table of Contents

CrewChief Critical Weather Service Overview	3
Welcome to CrewChief Critical Weather Service (CWS)	3
Why CrewChief Critical Weather Service?	3
Weather and Accidents	3
Critical Weather Setup & Overview	5
Setup	5
Current Weather	5
Forecast Weather	5
Map Controls	6
Alerts	6
Troubleshooting	6
View the Map	7
Selecting Weather Layers	7
View the Map	8
Weather Layers Explained	9
Understanding Weather Layers	9
Current Weather Layers	9
Radar	9
Lightening	9
Weather Observations	9
IR Satellite	9
National Weather Service Watches & Warnings	10
Current Temperate (North America)	10
Current Wind Speed (North America)	10
Forecast Weather Layers	10
Future Scan Radar	10
Severe Storm Probability	10
Tropical Storm Forecast	10

Spaghetti Models	10
Snowfall Accumulation.....	10
Radar	11
Wind Speed & Direction.....	11
Rainfall Accumulation	11
Road Conditions	11
Roadway Threats.....	11
Driver Weather	11
Conditions Forecast.....	11
Weather Definitions	12
Road Conditions.....	12
Threats/Hazards.....	13

CrewChief Critical Weather Service Overview

Updated July 22, 2025

Welcome to CrewChief Critical Weather Service (CWS)

CWS provides map visualizations of important weather activity and alerts to aid fleet managers in safety and efficiency. There may not be another service available to fleet managers with a greater potential ROI than accurate weather forecasts.

Why CrewChief Critical Weather Service?

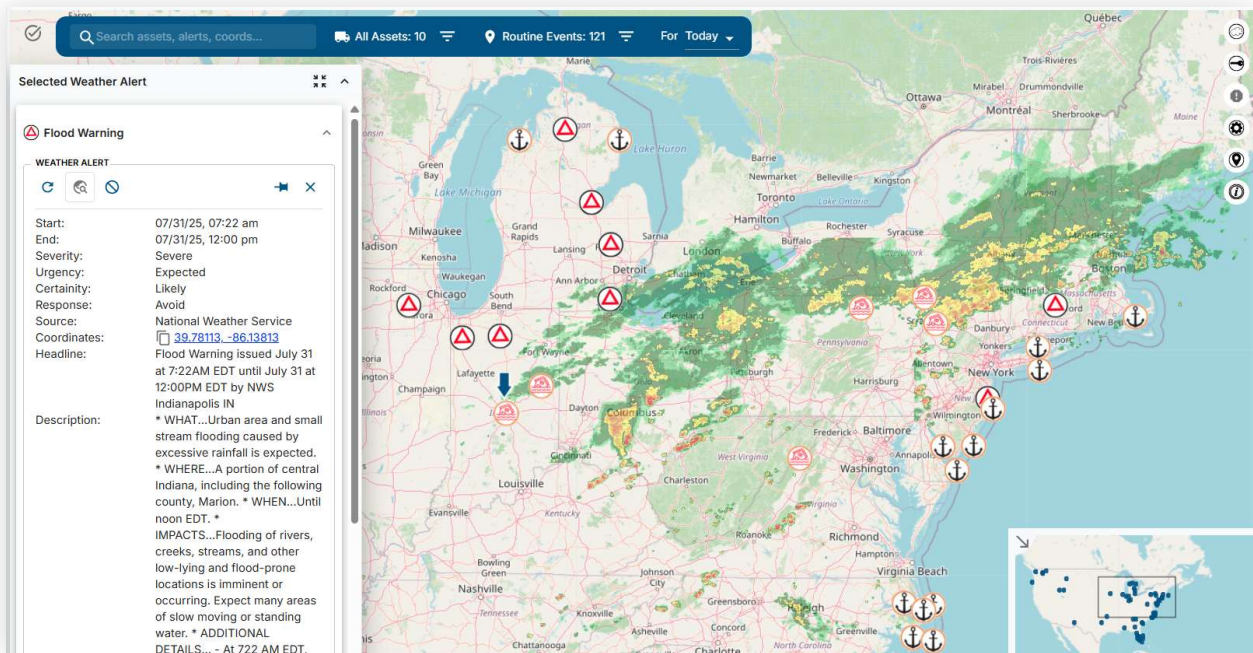
CWS is intended to provide current and forecast weather to fleet managers and dispatchers to enable real-time decisions to improve safety, routing efficiency, and on-time delivery. Weather impacts all field service operations and by combining telematics, mobile, and weather data on a map, rapid decisions can be made.

Weather and Accidents

The most obvious expensive aspect of severe weather conditions is vehicle accidents. Truck accident costs go well beyond the cost of repairs. If your fleet could reduce accidents by just 5% due to weather, how would that change your profitability?

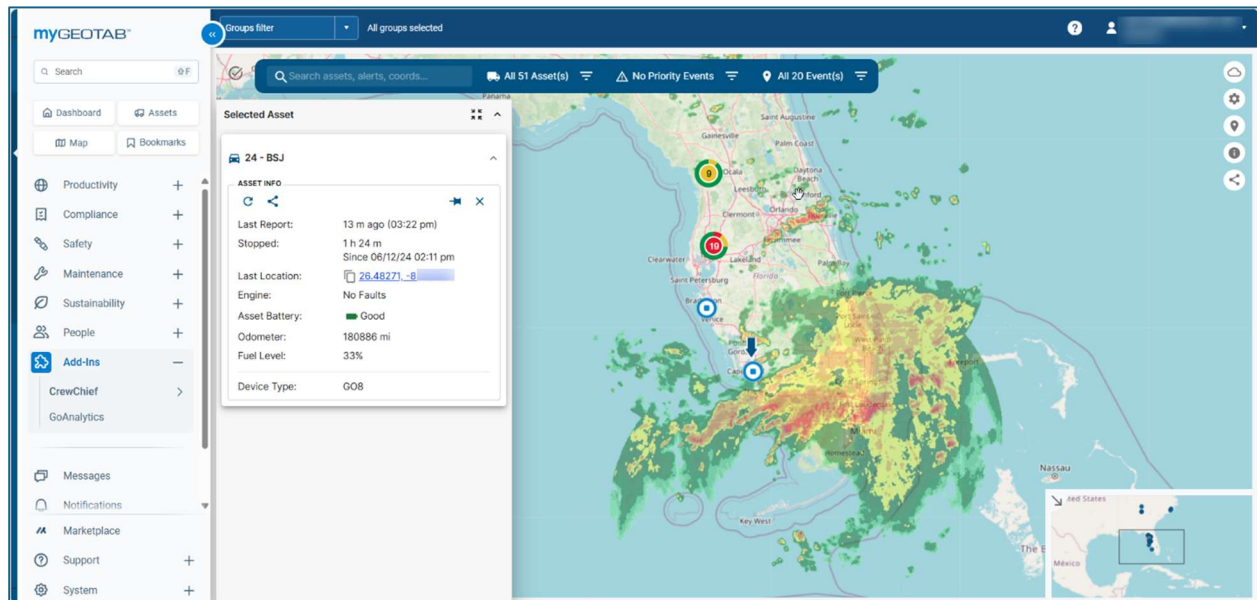
- Truck repair
- Lost cargo
- Roadside cleanup for hazmat
- Roadside goods transfer to a new truck
- Lost value of cargo (A truck of flowers can cost \$100,000)
- Loss of customers due to their loss of sales
- Driver injury and workers compensation
- Cost to hire, train and replace a driver
- Cost to send a second truck to make the delivery

[Download Weather Layer Definition .pdf](#)



Critical Weather Setup & Overview

Updated July 31, 2025



Setup

The setup process consists of placing an order through the Geotab Order Now process. If you are not using the Geotab platform, contact us for assistance. In Geotab, a weather menu will appear in the Add-in section. If you do not see a Marketplace left menu, contact your Geotab reseller.

Current Weather

The web portal enables dispatchers to see vehicles nationally in relation to current and future predicted weather. Advanced weather data identifies hazardous driving conditions such as high winds that might turn over a semi. Snow fall accumulation data can identify areas likely to have significant traffic issues resulting in missed delivery times.

Forecast Weather

Forecast weather is a game changer for fleet safety and time management. With HOS required limits to driving hours and rest periods, it is critical to profitability to avoid extensive weather delays.

[Read Weather Layer Definitions](#)

Attentive dispatchers can monitor vehicle travel and contact drivers to avoid upcoming areas likely to be impacted by weather. Weather layers range from snow, wind, tornado, hurricanes, tropical storms, wind chill, blizzards and thunderstorms.

Map Controls

There are two map controls found on the top right of the weather map. The top icon enables the weather filter options and the second provides a visual scale for the filters selected.

Alerts

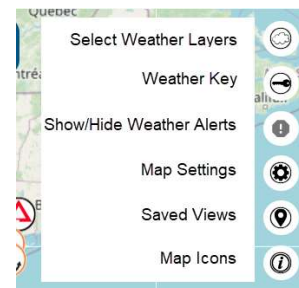
Weather alerts are regional and provided by multiple government agencies. The alerts are intended to be general warnings and should be used with other data to make safety decisions. Alerts, or lack of alerts, are not guaranteed to be accurate and may be delayed for various reasons.

Note: Alerts are automatically enabled for the CrewChief mobile app which can also be installed through the marketplace. Alerts to the mobile app are only available when you have both the Critical Weather Service and the CrewChief Mobile App service.

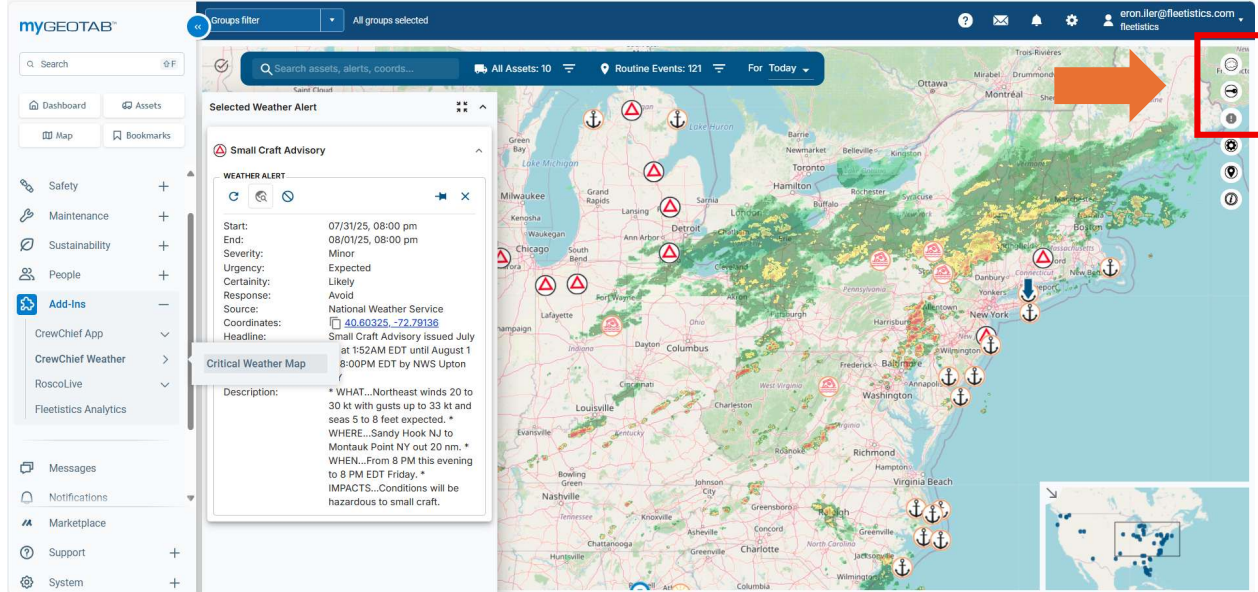
Troubleshooting

If weather does not appear on the map, follow these steps.

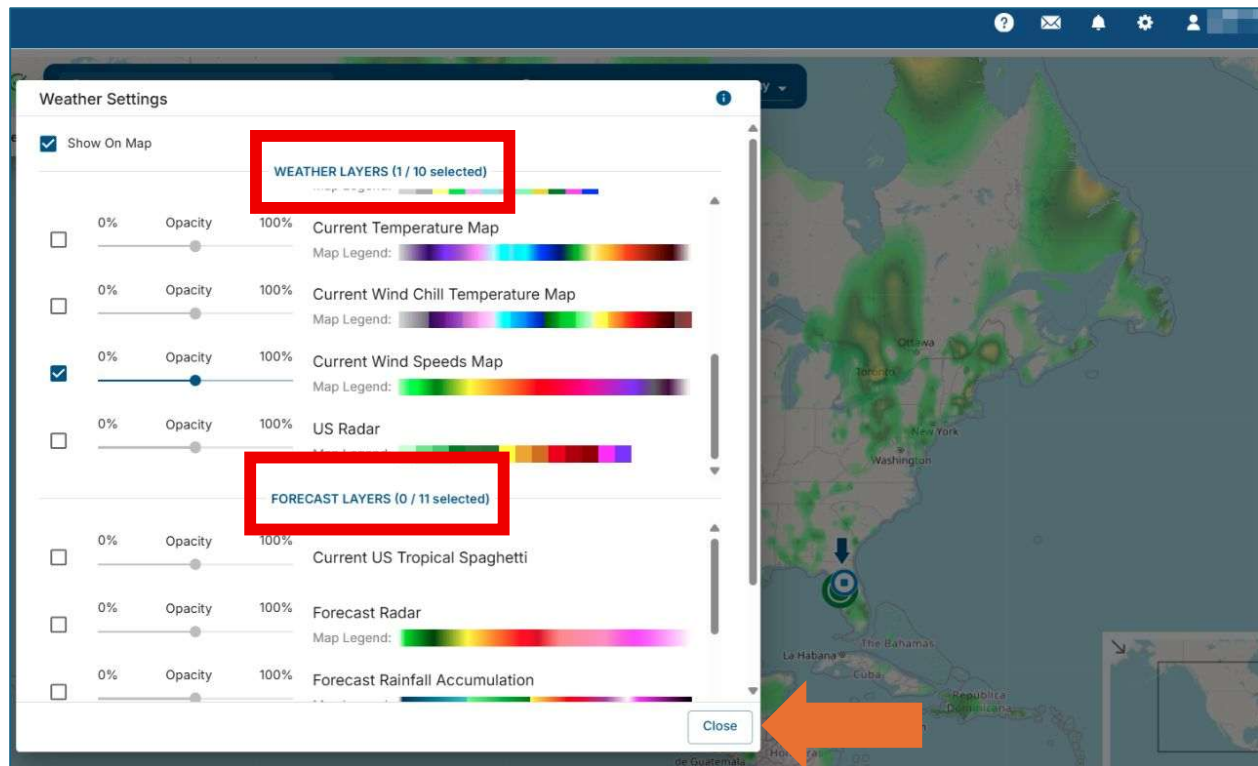
1. Confirm the Show/Hide alert map icon is not selected (upper right section of map)
2. Check the internet connection.
3. Refresh the browser.
4. Confirm the service is active in your fleet management account.
5. Test in another browser and on a computer that is not on the same network.
6. Contact CrewChief through this website.



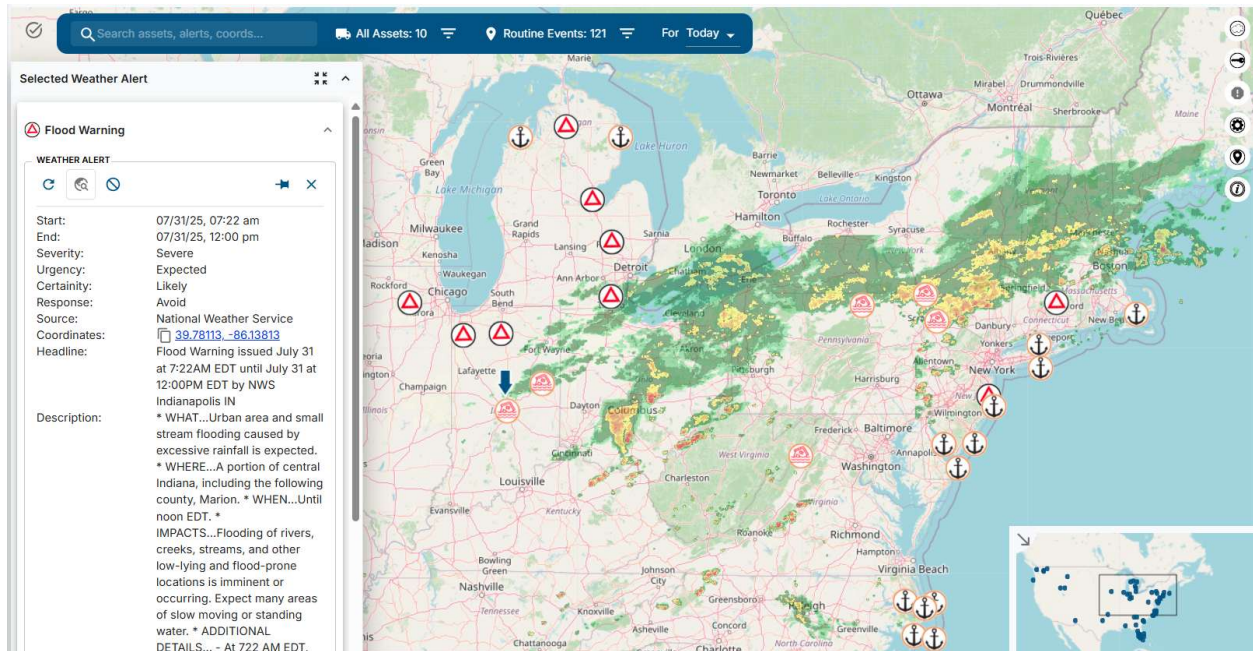
View the Map



Selecting Weather Layers



View the Map



Weather Layers Explained

Updated June 2, 2025

Understanding Weather Layers

Turn layers on and off to get the weather conditions you need to safely and efficiently operate your fleet.



Current Weather Layers

Radar

Through advanced algorithms, Data can not only tell you the intensity of precipitation, but whether it's rain, ice, or snow.

Lightening

See where lightning is occurring in real time as it relates to your vehicles.

Weather Observations

Displays temperature, dew point, wind speed/directions, weather condition, and visibility across the country.

IR Satellite

Satellite imagery is useful when tracking tropical storm activity.

National Weather Service Watches & Warnings

Know when your vehicles are entering an area that's under an NWS watch or warning.

Current Temperate (North America)

From extreme cold to heat, temperatures impact your customers' operations. See how current temperatures vary across your service area.

Current Wind Speed (North America)

Wind Speed map gives you a visual of all winds more than ten mph, so customers can see where high or gusty winds may impact operations.

Forecast Weather Layers

Future Scan Radar

Future Scan Radar provides a **one-hour forecast** of radar imagery. The product updates every 10 minutes. Do you want to know when that rain approaching your location will impact your area? This product can give you those details.

Severe Storm Probability

Know if your vehicles and employees are in areas where dangerous weather is expected. Data's Severe Storm Probability provides a three-day severe weather forecast. Areas are highlighted based on the following criteria; Storms, Slight Risk of Severe Storms, Enhanced Risk of Severe Storms, Moderate Risk of Severe Storms, and High Risk of Severe Storms.

Tropical Storm Forecast

See the official National Hurricane Center forecast- as it updates. An NHC forecast shows the expected strength and direction of a tropical event, including tropical storms and hurricanes.

Spaghetti Models

Spaghetti Models help your customers gauge their confidence in a National Hurricane Center Forecast. See all possible forecast tracks of a Hurricane or Tropical Storm.

Snowfall Accumulation

Hourly snowfall accumulation allows you to see how much snow is expected to fall and when conditions will deteriorate.

Radar

Track rain, ice, and snow over the **next 60 hours** and know the time precipitation will impact your service location.

Wind Speed & Direction

Track wind speed and direction out over the next 60 hours.

Rainfall Accumulation

Flash Flooding is one of the deadliest forms of severe weather. Rainfall Accumulation Maps help you see where the heaviest rainfall will occur, helping drivers avoid dangerous areas.

Road Conditions

Track the following Road Conditions- wet, flooded, patchy ice, ice covered, snow, and heavy snow. See below for additional information.

Roadway Threats

Road Conditions, Fog, and Precipitation are not the only threats to a driver's safety and your customers' vehicles. Hail, Tornadoes, and High Winds can put your driver at risk. Know the locations of these dangers with respect to your assets.

Driver Weather

Weather Conditions can change quickly. Know conditions experienced by your vehicles in real-time. Track the following weather- Precipitation Type/Intensity and Fog Density. Advanced weather processing provides the localized weather conditions that put drivers at risk of an accident.

Conditions Forecast

Track the following Road Conditions- wet, flooded, patchy ice, ice covered, snow, and heavy snow.

Weather Definitions

Current Driver Weather

Fog (current weather): Visibility restriction affecting the sight-distance of a driver.

Heavy Fog (current weather): Urgent visibility restriction reducing visibility on the order of car lengths.

Light Rain: Rain that causes no visibility restriction but makes the road slippery.

Moderate Rain: Rain that causes some visibility restrictions.

Heavy Rain (current weather): Rapid rate of rain that is capable of quickly covering the roadway. Hydroplane possibilities increased.

Snow: Light to Moderate snow that may cause isolated travel problems.

Heavy Snow (current weather): Rapid rate of snowfall that quickly accumulates and reduces visibility. Travel problems are likely in these areas.

Ice: Freezing rain, sleet, or mixed wintry precipitation, capable of producing isolated travel problems.

Heavy Ice (current weather): Rapid rate of freezing rain, sleet, or mixed wintry precipitation, capable of quickly producing widespread travel problems and damage to trees and power lines.

Road Conditions

Snow (road condition): Snow in an amount covering (or just partially covering) secondary and less-travelled roads.

Heavy Snow (road condition): Snow in an amount covering major roadways and interstates

Patch Ice (road condition): Patchy ice, with bridges likely to experience issues and isolated patches of black ice.

Ice (road condition): Ice covered roads resulting in significant travel impacts.

Flood: Ponding on roads in areas and possible flash flooding.

Wet: Wet or damp roads, no ponding expected.

Threats/Hazards

Dangerous Wind: Crosswinds exceed 35mph, the critical threshold for high profile vehicles.

Hail: Based on Data's patented storm tracking, highlights areas where Severe Hail is possible over the next fifteen minutes.

Twisting Wind: Based on Data's patented storm tracking, highlights areas where Tornados are possible over the next fifteen minutes.